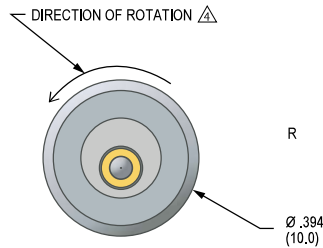
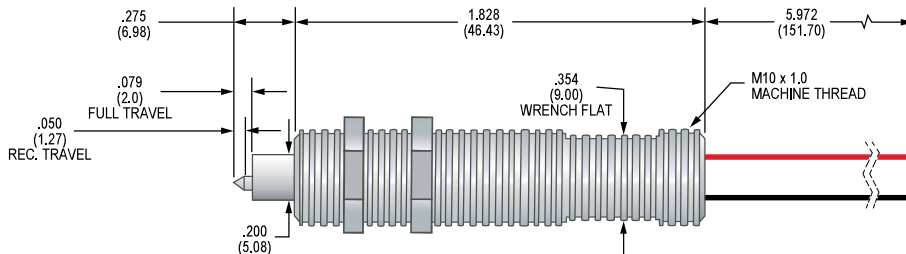


BMP-4



Mechanical

- Recommended Travel: .050 (1.27)
- Full Travel: .079 (2.00)
- Direction of Rotation: Counter clock wise
- Scribed Diameter: .050 (1.27)

Spring Force in oz. (grams)

	Preload	Rec. Travel
Standard	2.43 (68.9)	5.0 (141.7)

Electrical (Static Conditions)

- Current Rating: 20 mA
- Voltage Rating: 12VDC
- Recommended Duty Cycle: 2 sec. On (min.)
3 sec. Off

Materials and Finishes

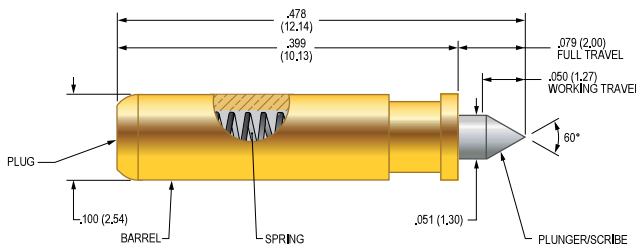
- Plunger Tip: Carbide
- Receptacle: Stainless Steel

Mounting

- Hole diameter: BMT-4
Ø .398 (10.1)
or M10 x 1.0 threaded hole

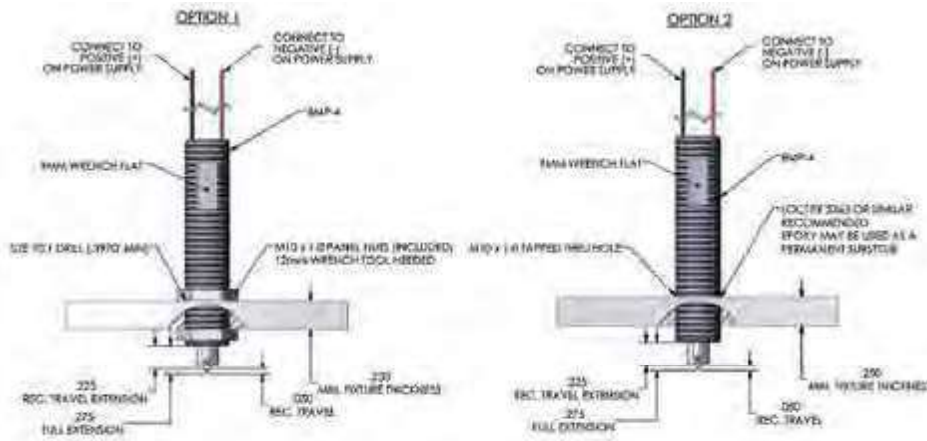
Order Number

- Board Marker: BMP-4
- Replacement Tip kit: BMT-4



BMT-4

Mounting Options



Dimensions in inches (millimeters). Specifications subject to change without notice. Consult factory for other temperature requirements, and applications below -40°C. Stocking Disclaimer: Stocking levels for part numbers listed in this catalog are subject to change. Availability is based on current levels of usage and demand.

